

HANDI-MOVE MODEL 2500

# CEILING HOIST

The Handi-Move ceiling hoist takes you where you want to go



- Lifts from the floor
- Emergency down feature
- Independent transfers with the Body support
- Accommodates conventional slings
- Manual control and / or control panel
- Infra-red remote control available
- Automatic stop at any desired spot
- Fits into every environment
- Smooth stop and go
- The various rail systems make it possible to access all areas



**Handi-Move** INTERNATIONAL

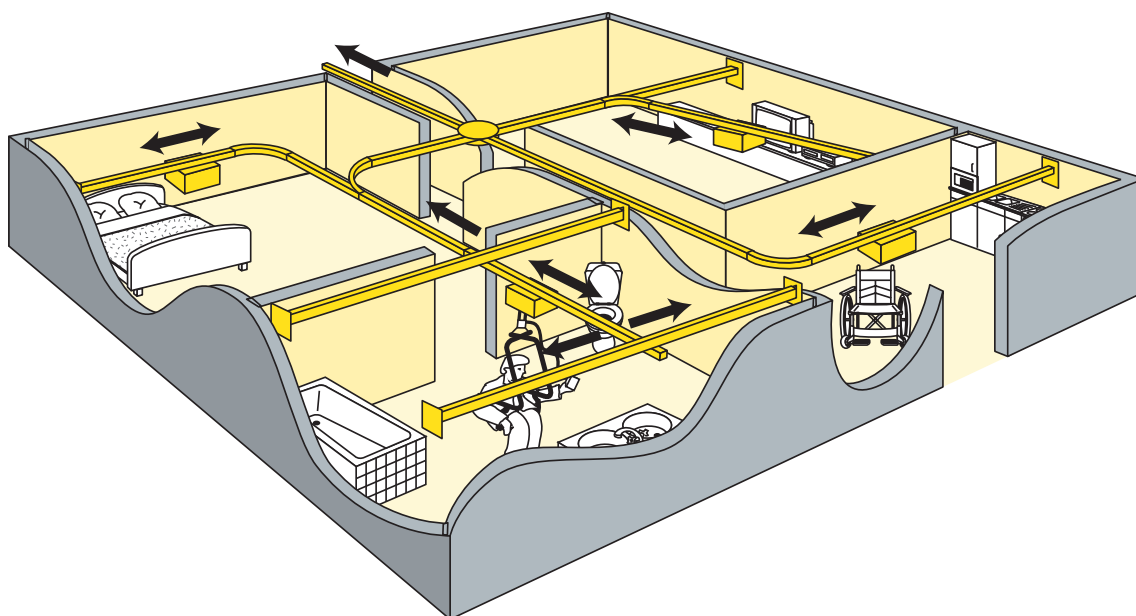
SPECIALISTS IN INNOVATIVE AND RELIABLE LIFT & CARE SYSTEMS

# TECHNICAL SPECIFICATIONS

## DIMENSIONS AND SPECIFICATIONS

Safe working load: .....	200 kg (3000 mm motor band: 160 kg)
Batteries: .....	2 x 12 V rechargeable, 9.5 Ah
Standard motor band length: .....	2000 mm (option 3000 mm)
Distance between rail and swivel hook: .....	190 mm
Rail system: .....	aluminium, lacquered in white
Smooth stop and go: .....	electronic
Cover: .....	ABS
Emergency down: .....	mechanical
Emergency stop: .....	present
Number of lifts with fully charged batteries: .....	160

## EXAMPLE OF A ROUTE



## AVAILABLE IN 4 DIFFERENT VERSIONS:

1. HM2500 (ref 2500):  
lifting motor (only up and down) with pneumatic handcontrol.
2. HM2500 RC (ref 2505):  
lifting motor (only up and down) with infra-red remote control.
3. HM2500 L (ref 2510):  
lifting and lateral motor (up and down, left and right) with pneumatic handcontrol.
4. HM2500 LRC (ref 2515):  
lifting and lateral motor (up and down, left and right) with infra-red remote control.

For free demonstration or further information :

