



SERVICE MANUAL

BLUONE PORTABLE POOL LIFTER



STANDARD CHECKING

Check list

Check the following unit parts and make maintenance operations if needed:

After 6 months of unit work

- Check pins and joints (See spare parts sheet no. 14 – they are 4 pins in the lifting arm)
- Check safety belt junctures and locks (See spare parts sheet no. 45)
- Check electric connections and wiring (See unit electric diagram)
- Check oil level in the oil tank in case of oil leaks (See spare parts sheet no. 37)
- Check cylinder jacks in case of oil leaks and replace washer if needed (See spare parts no. 38)

Every 12 months

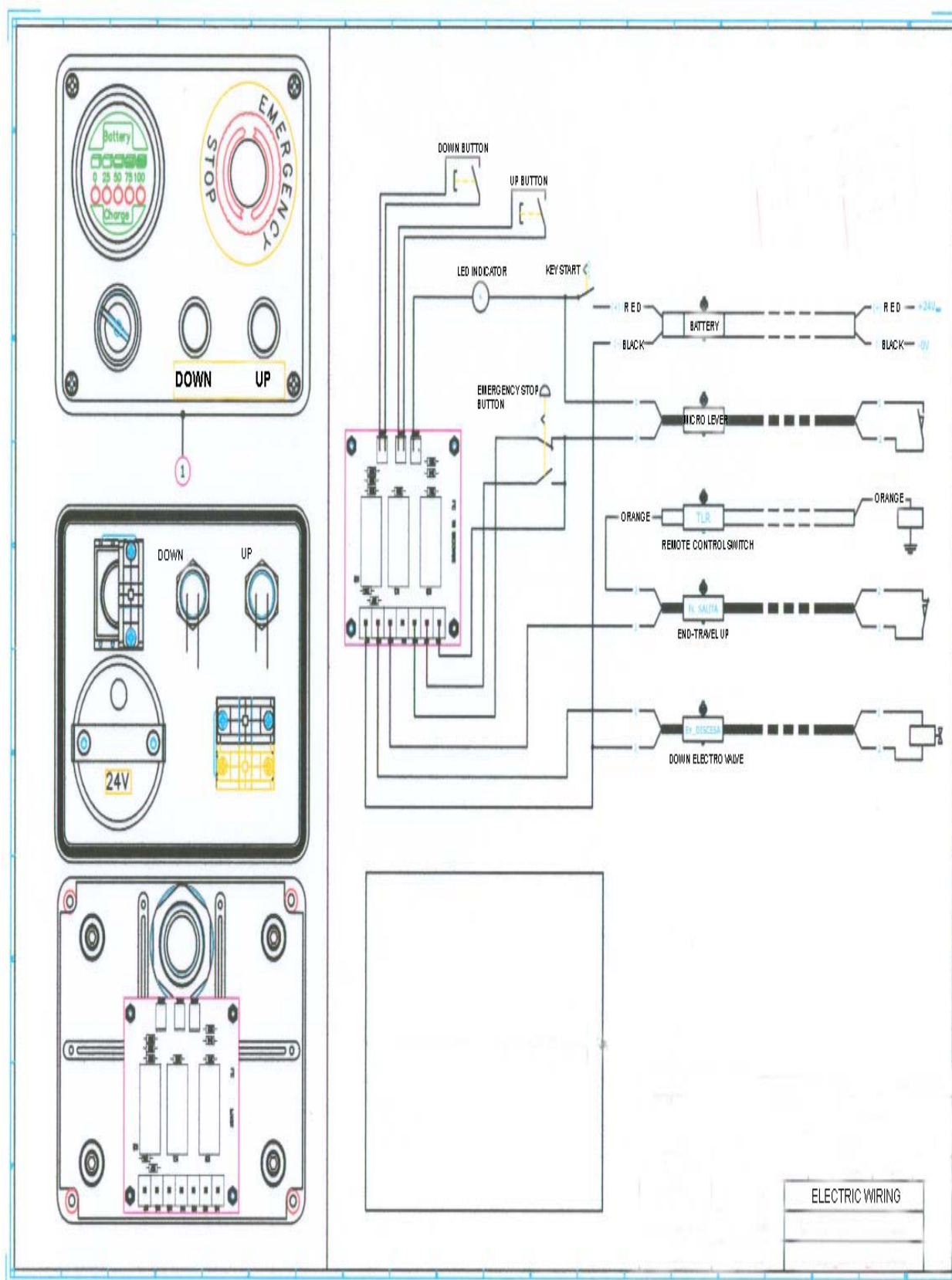
- Check oil-pressure cylinders by checking the correct lift-up / lift-down of the unit arm with a person on the seat (See spare parts sheet no. 38)
- Check hydraulic applications by checking the correct lift-up / lift-down of the unit arm with a person on the seat. Adjust the screw on the left side of the oleodinamic panel if there is not enough oil-pressure. The screw is covered by an orange-coloured plastic cap (See spare part sheet no. 37)





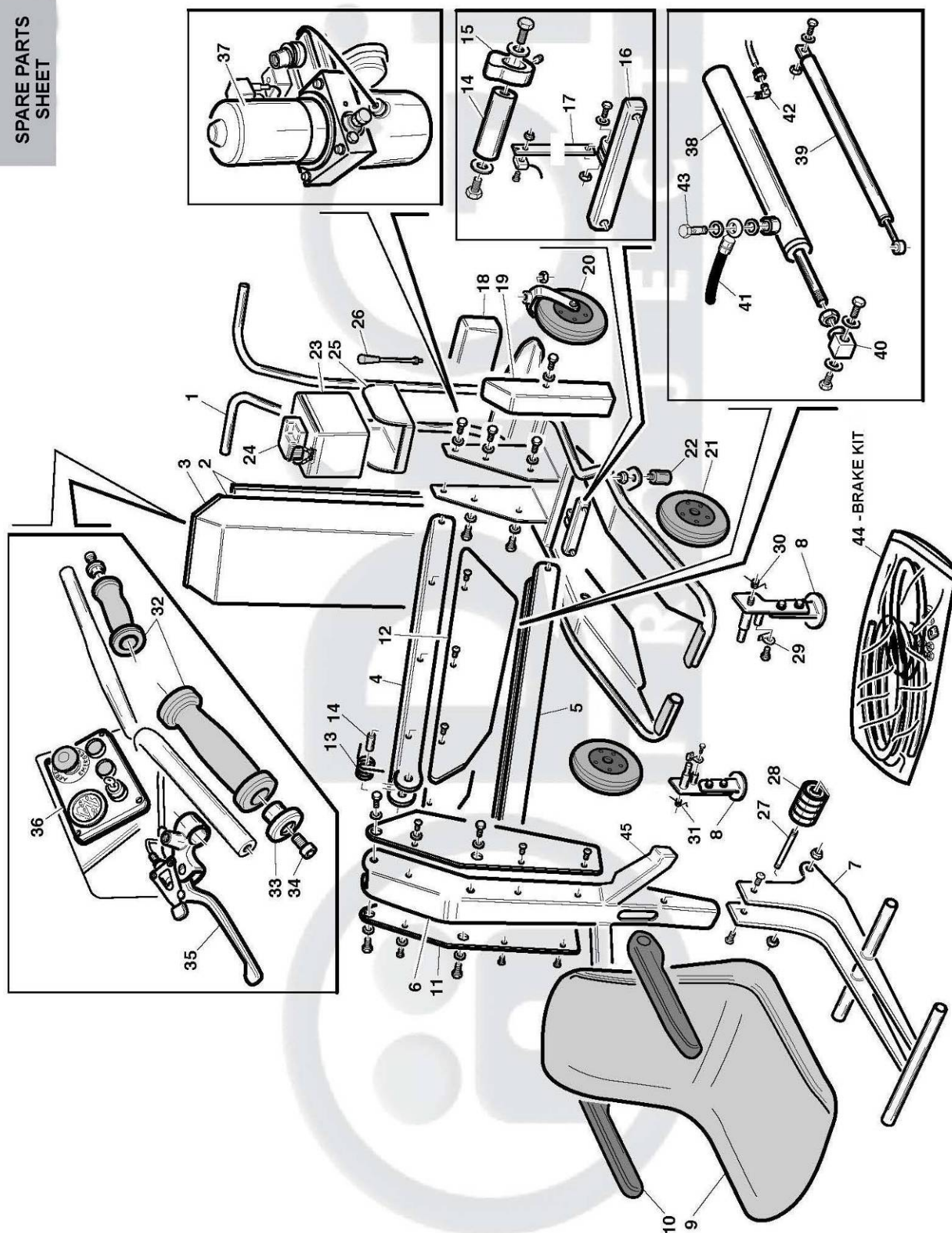
- Check safety devices
- Check the unit chassis by checking there are no breakings and bendings. (See spare part sheet no. 1)
- Check/or replace the metal plates by checking they can be properly read
- Replace and refill hydraulic oil and oil filter in case of oil leaks and replace washer if needed (See spare parts no. 37)
- Check pins and joints (See spare parts sheet no. 14 – they are 4 pins in the lifting arm)
- Check safety belt junctures and locks (See spare parts sheet no. 45)
- Check and test electric connections and wiring (See unit electric diagram)

A competent service staff must check and test all the unit safety devices, controls, and mechanical parts if the unit is not used for a period of time longer than three months.





SPARE PARTS
SHEET





Both the operator and the service operations must be indicated in the pages dedicated to the check coupons.

Maintenance operations must be executed with the starter turned off. The unit electric devices and components must be properly protected and covered when you wash the unit. Pressure water-jets may damage electric devices, components and wiring.

**(SERVICE COUPONS)**

The following service coupons are for the operator and for the service use.

After 6 months of use	Date	Signature

After 12 months of use	Date	Signature

After 24 months of use	Date	Signature

After 36 months of use	Date	Signature



TROUBLE SHOOTING

ACTIONS:

1) Replacement of battery charger / batteries / oleodynamic panel /electric connections & wiring.

- 1) Unscrew the controls panel screws



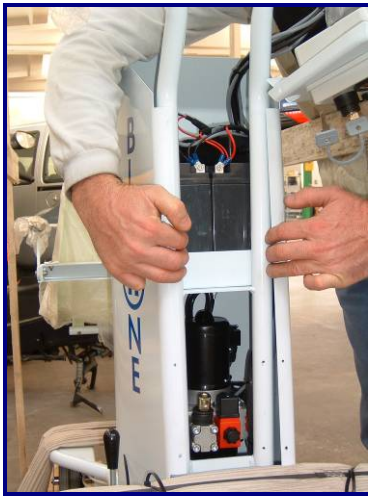
- 2) Unscrew the 2 screws at the base of the black service plate.



- 3) Unscrew the 2 screws at the lateral sides of the main chassis.

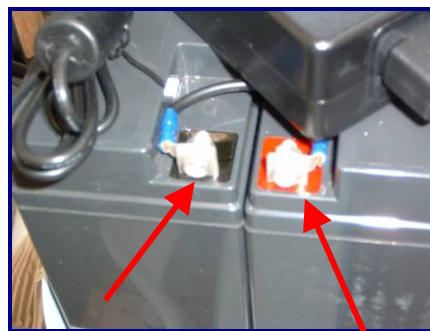
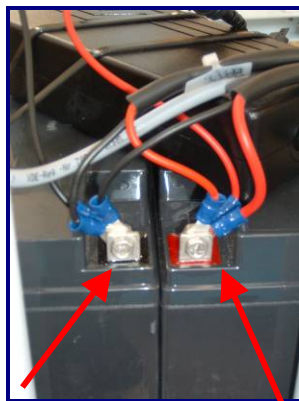


- 4) Remove the main chassis.



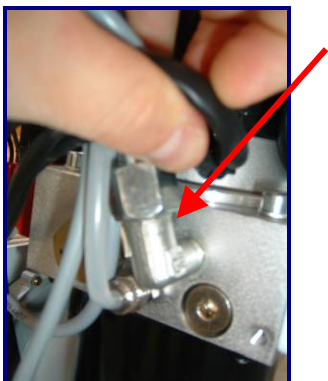
3) Replacement of Batteries

- 1) Cut nylon bands
- 2) Unscrew the screws that keep wires on the battery clips.
- 3) Replace the old batteries with the new ones. You will need new nylon bands as well.



4) Replacement of Oleodinamic panel

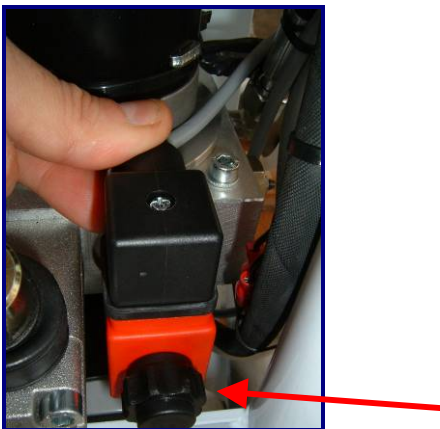
- 1) Lower the down/up unit arm up to ground level in order to avoid oil leaks
- 2) Unscrew the hydraulic pipe by means of a no. 19 spanner-key



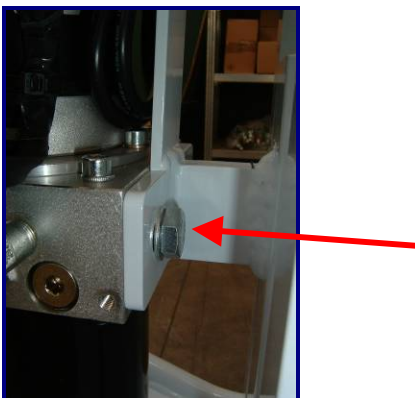
- 3) Remove the give-off pipe by means of a no. 12 spanner-key



- 4) Unscrew the screw and remove the electric valve connection – red colour



- 5) Free the oleodynamic panel from the electric band
- 6) Unscrew the fixing screws with a no. 17 spanner-key.



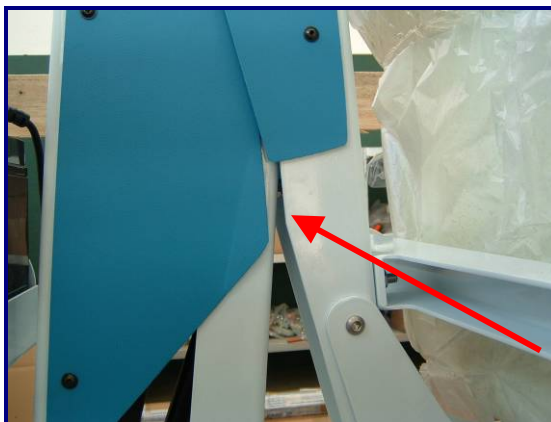
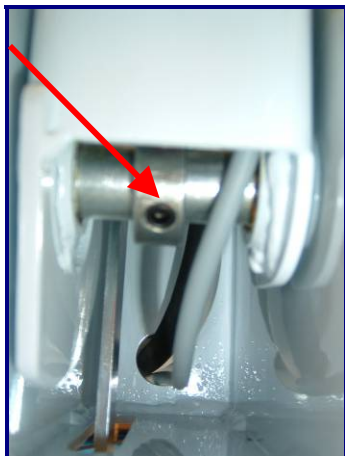
- 7) Remove the oleodynamic panel from the right side -back view.
- Warning:** Do not turn the oleodynamic panel upside down in order to avoid oil leaks.



5) Adjustment of end-travel microswitch (up-right position)

- 1) Adjust the end-travel cam by means of the cam-screw in a way that the arm stays in up-right position with cm. 1 of space. Use a no. 4 allen spanner-key. See also Spare parts drawing for cam part – Ref. No. 15.

Warning: never change the microswitch position. Change the cam position.



6) Replacement of end-travel microswitch

- 1) Unscrew the 2 screws of the end-travel microswitch and re-start the adjustment –see above.



SERVICE INFORMATION No. 001

Battery maintenance

Inform your customers to put the BluOne under charge at least one / two time a week for a time of at least 10 hours. No matter if the BluOne is used or it is not used.

It is absolutely important to avoid the complete download of the battery.

This is important to keep the battery in good condition.

The Battery Charger is external and it is connected to the control panel input by means of a cordset. There are two LED indicators for

-Battery under charge = red LED on

-Battery charged = green LED on



If your electric installation is connected to an electric power generator or similar device, we suggest to use a multi-socket with circuit-breaker for the BluOne lifter under charge operations. It can be useful to cut down electric power in case of excessive high voltage that may damage the BluOne lifter under charge.

SERVICE INFORMATION No. 002

Electro valve cleaning

Source of trouble: the BluOne lifter is OFF and the unit seat gets in low position after long use in time.

Possible cause: some small dirty scraps in the hydraulic plumbing

Action: Open the manual tap and keep the SALITA/Up button pushed on the controls panel –see Owner's Manual point E.02.

Trouble-shoot: the pump action cleans the electro valve.

SERVICE INFORMATION No. 003

Adjust of steel endings

When no person is seated on the seat, the steel endings must keep a distance of nearly cms. 3 from the ground.



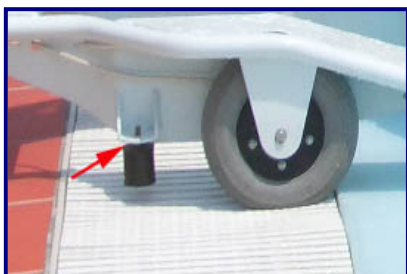
If the distance is more than cms. 3, unscrew the rubber part of the endings and add one or more nuts in order to reach the correct distance of cms. 3 from the ground.



SERVICE INFORMATION No. 004

Adjust of safety rubber stoppers

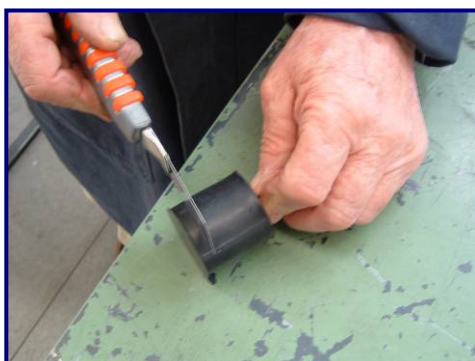
In case of small slopes close to the pool deck, the rubber stoppers can scratch against the ground. In order to avoid it, unscrew the rubber stoppers and remove the nut



Re-screw the rubber stoppers without the nut; take the nut and screw it on the top.



In case of more relevant slopes closet o the pool deck, you have to cut the rubber stoppers in order to make them shorter. In this way the lifter gets smooth to the pool deck. Use a cutter to cut the rubber stoppers.

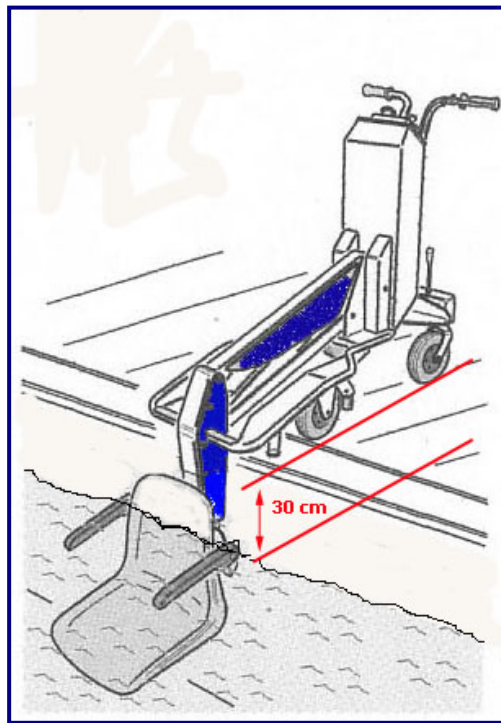
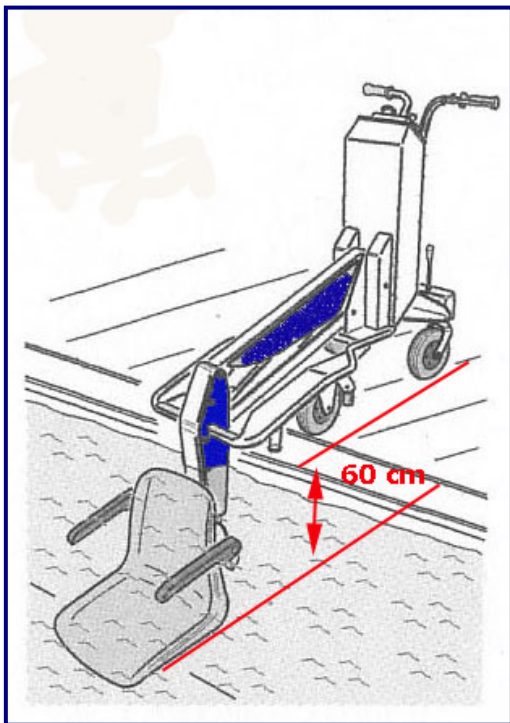


SERVICE INFORMATION No. 005

Seat lift-down in the water

The maximum lift-down of the seat in the pool-water is minus cms. -60 from the ground.

Please use the BluOne lifter in the following pool-water range: from cms. 0 (pool-water at ground level) to minus cms. -30 (pool-water at minus cms. -30 from ground level).



SERVICE INFORMATION No. 006

Use of the lifter in different kinds of pool decks.

No problem of use



No problem of use



No problem of use



No problem of use



No problem of use



No problem of use



Example 1: Pool deck with rise.

Make a metal ramp, width at least cms. 60.

The final height of the ramp must be of the same height than the pool deck.

We suggest to fix the ramp to the ground by means of no. 4 or more anchor screws.



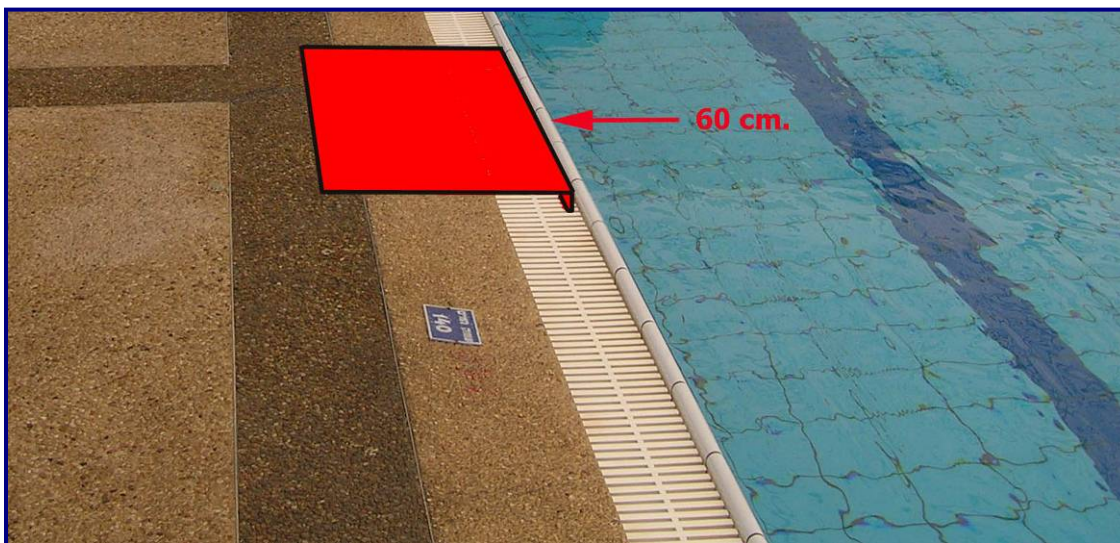
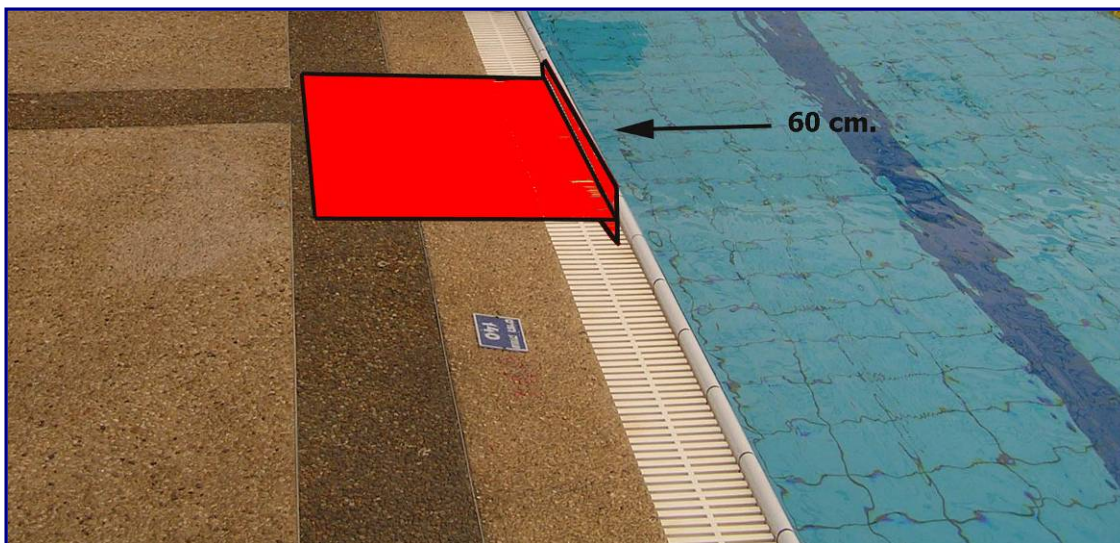
Example 2: Pool deck with slope down.

Make a T- or L- shaped metal ramp, width at least cms. 60.

The ramp must be in line with the pool deck.

The ramp must end with a "T" or "L" shape in a way to fit against the pool deck.

It may be possible to fix the ramp to the ground by means of no. 4 or more anchor screws.

**Notice:**

The above-mentioned examples are just a few of the huge quantity of different situations you may meet. Please contact our Technical Department with photos and problem description for any further need you may have. E-mail: info@digiproject.biz.