

Step Lift - SB800 (with bridge)

The Wessex Step Lift SB800 Range has been developed as a relatively low cost option to give wheelchair users easy access where difficulties exist due to a change in level or the presence of steps.

The lift is compact whilst offering a large platform area and shallow ramp for easy access. The range offers through and side access platforms, both with bridging available as an option. All models are finished in Stainless Steel with Aluminium Platform and Ramps as standard.

Flexibility

Can be installed either internally or externally. May be used to rise and bridge over a number of steps or installed alongside steps.

Lifts to a maximum height of 800mm Through Access, 1000mm Side Access

Installation Instruction and After Sales Care

The lift will be installed by Wessex trained engineers.

A comprehensive user manual, on site training and maintenance advice is provided.

Wessex offer a selection of maintenance contracts to meet individual requirements.



The Specialists in Low Rise Lifting Platforms

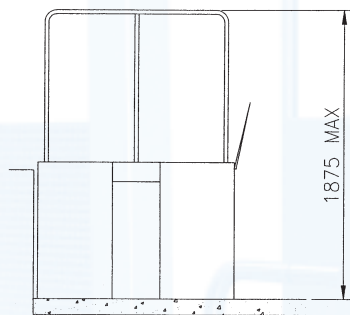
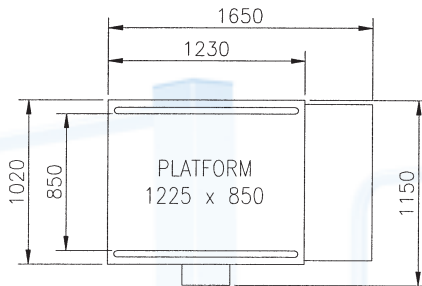
 **Wessex**

Step Lift - SB800 (with bridge)

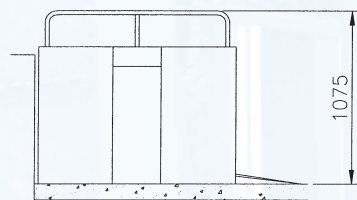
Technical details

Dimensions

Lift only



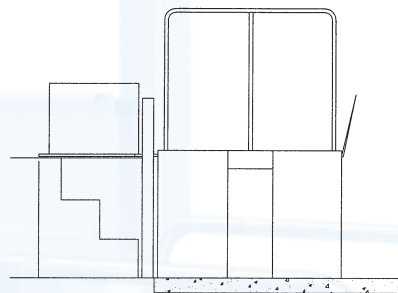
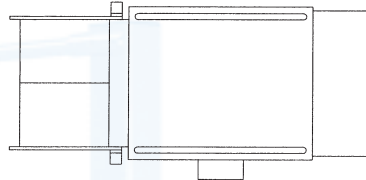
LIFT SHOWN AT MAXIMUM TRAVEL
(UPPERMOST POSITION)



LIFT SHOWN IN
LOWEST POSITION

Lift with bridging

Three bridging options are available spanning up to a maximum of 940mm



For further details
(including side access)
and options please
request drawing number
SB00 9000

Features

Shallow Ramp for easy access. Ramp automatically folds when lift is raised.

Aluminium Non-Slip Floor fitted as standard.

Easy to use internal controls for operator independence.

Call Stations may be located in convenient positions at both levels to operate the lift.

A keyswitch to isolate the lift when not in use is available as an optional extra to prevent unauthorised use.

Manual Lowering for use in the event of a power failure.

Concertina Blind fitted to underside of platform to discourage children and animals from hiding under the lift. Also acts as a guard against litter. Standard on all models.

Safety Barrier or Interlocked Gate at the upper level are available as an option.

Safe Working Load - 225kg

Maximum step height - 800mm Through Access, 1000mm Side Access.

Standards

Conforms to BS 6440:1999



CE Marked in compliance with European Regulations



ISO 9001
FM 58435

SB00 7500 Issue A

Wessex Medical Equipment Company Limited
Budds Lane, Romsey, Hampshire, SO51 0HA
Tel: +44 (0)1794 830303 Fax: +44 (0)1794 512621
Email: info@wessexmedical.co.uk www.wessexmedical.co.uk
A member of the Ratcliff Group

Wessex